



SHINING 3D®

EINSCAN PRO 2X/2X PLUS MULTI-FUNCTIONAL HANDHELD 3D SCANNER





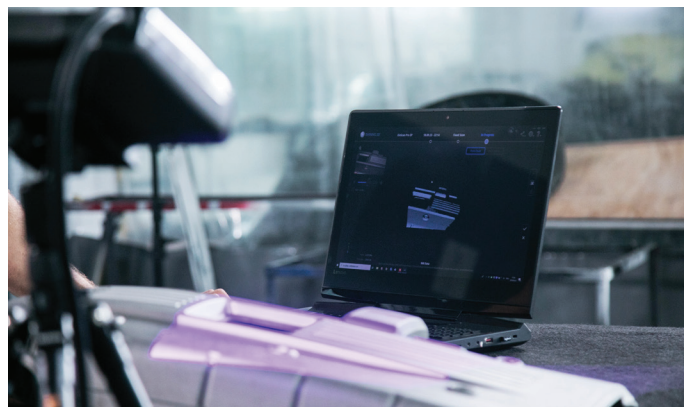
Higher Efficiency & Quality



Healthcare



Inspiration



Creative Imagination

HIGH-QUALITY 3D MODELING 2.0

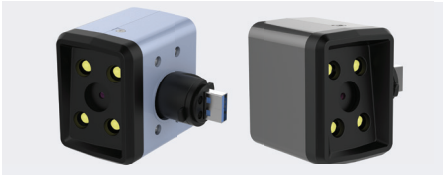
Based on the feedback from thousands of users, SHINING 3D has developed the next generation of the widely celebrated EinScan Pro series. Being faster and more accurate than ever before, the EinScan Pro 2X series will take high-quality 3D modeling to the next level.

- Breakthrough in scanning speed
- Excellent accuracy
- Catching fine details
- Versatile scan modes & align modes
- Portable and user friendly design



PROVEN ADD-ONS

ENABLING LIMITLESS APPLICATIONS



Color Pack



Industrial Pack



HD Prime Pack

BRAND-NEW SCANNING SOFTWARE

EX SCAN PRO

- Brand-new UI and workflow
- User-friendly operation
- New Operation Mode Option
- High compatibility
- Mesh editing



SOLIDEDGE SHINING 3D EDITION

DESIGN TOOL FROM SIEMENS PLM SOFTWARE

SolidEdge SHINING 3D Edition includes reverse engineering, generative design, simulation and CAD tool in one platform. SHINING 3D EinScan scanners, integrated with SolidEdge SHINING 3D Edition, provide users the solution covering „3D Digitize – Design & Simulate – Additive Manufacture“ to generate high-quality 3D data for production.



TECHNICAL SPECIFICATIONS

EINSCAN PRO 2X/2X PLUS

Model	EinScan Pro 2X				EinScan Pro 2X Plus			
Scan Mode	Handheld HD Scan	Handheld Rapid Scan	Auto Scan	Fixed Scan	Handheld HD Scan	Handheld Rapid Scan	Auto Scan	Fixed Scan
Scan Accuracy	up to 0.05 mm	up to 0.1 mm	0.04 mm	0.04 mm	up to 0.05 mm	up to 0.1 mm	0.04 mm	0.04 mm
Volume Accuracy	0.3 mm/m (Markers Alignment)		/	/	0.3 mm/m (Markers Alignment)		/	/
Scan Speed	20 fps 100,000 points/s 7 data capture lines	30 fps 1,500,000 points/s	Single Scan < 1s	Single Scan < 1s	20 fps 1,100,000 points/s 100 data capture lines	30 fps 1,500,000 points/s	Single Scan < 0.5 s	Single Scan < 0.5 s
Point Distance	0.2 mm - 2 mm	0.2 mm - 2 mm	0.16 mm	0.16 mm	0.2 mm - 3 mm	0.25 mm - 3 mm	0.24 mm	0.24 mm
Single Scan Range	135*100 mm - 225*170 mm				208*136 mm - 312*204 mm			
Working Center Distance	400 mm				510 mm			
Align Mode	Markers Alignment	Markers Alignment, Feature Alignment (with rich geometrical features on the surface)	Turntable Coded Targets, Feature, Markers, Manual, Alignment	Markers, Feature, Manual Alignment	Markers Alignment	Markers Alignment, Feature Alignment (with rich geometrical features on the surface)	Turntable Coded Targets, Feature, Markers, Manual, Alignment	Markers, Feature, Manual Alignment
Texture Scan	No	Yes (with Add-on: Color Pack)			No	Yes (with Add-on: Color Pack)		
Data Format	OBJ, STL, ASC, PLY, P3							
Scan Headed Weight	1.13 kg (include the USB3.0 cable)							
OS System Support	Win 7, Win 8, Win 10 64 bit							
PC Requirements	Display card: NVIDIA GTX770 or higher; Video memory>4G; CPU: i7 or higher; RAM: 16G or higher; USB 3.0							

Notice: SHINING 3D reserves the right to introduce modifications or alterations to any of the specifications and images used in this document.